

Journal of the Canadian Historical Association Revue de la Société historique du Canada

Journal of the
Canadian Historical Association
Revue de la
Société historique du Canada

Errata

Volume 16, numéro 1, 2005

URI : <https://id.erudit.org/iderudit/015737ar>

DOI : <https://doi.org/10.7202/015737ar>

[Aller au sommaire du numéro](#)

Éditeur(s)

The Canadian Historical Association/La Société historique du Canada

ISSN

0847-4478 (imprimé)

1712-6274 (numérique)

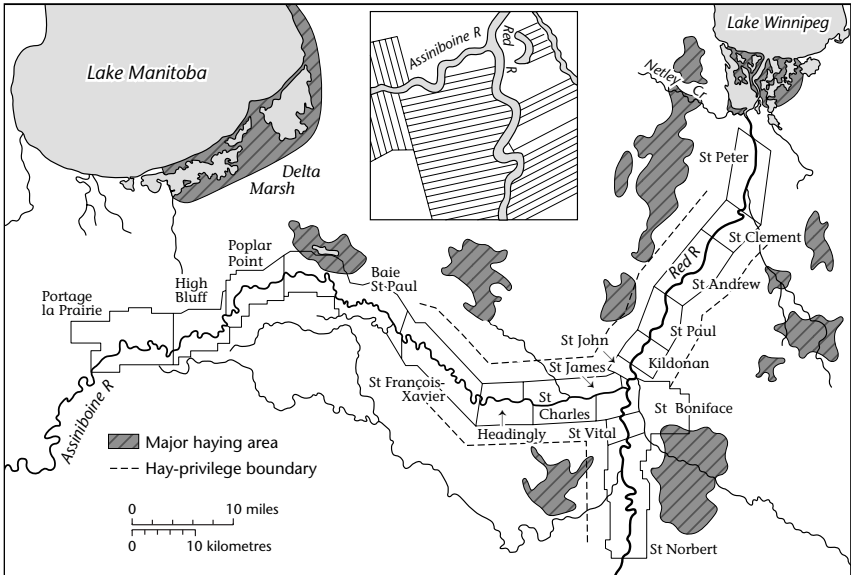
[Découvrir la revue](#)

Citer cet article

(2005). Errata. *Journal of the Canadian Historical Association / Revue de la Société historique du Canada*, 16(1), 341–341. <https://doi.org/10.7202/015737ar>

ERRATA

In Vol. #15 a map was omitted from Shannon Stunden Bower's article on wetlands and land use in Manitoba. It is reprinted here, and the editors sincerely apologize for this oversight.



19th Century Land Use along the Red and Assiniboine Rivers. Adapted from Barry Kaye, "The Historical Development of The Cultural Landscape of Manitoba to 1870," in The Geography of Manitoba: Its Land and Its People, eds. John Welsted, John Everitt, and Christoph Stadel (Winnipeg: The University of Manitoba Press, 1997), 83.