



## **Takotsubo Cardiomyopathy** **Cardiomyopathie de Takotsubo**

Katerina Schwab

Volume 13, numéro 5, 2022

URI : <https://id.erudit.org/iderudit/1092474ar>

DOI : <https://doi.org/10.36834/cmej.75249>

[Aller au sommaire du numéro](#)

Éditeur(s)

Canadian Medical Education Journal

ISSN

1923-1202 (numérique)

[Découvrir la revue](#)

Citer ce document

Schwab, K. (2022). Takotsubo Cardiomyopathy. *Canadian Medical Education Journal / Revue canadienne de l'éducation médicale*, 13(5), 120–120.  
<https://doi.org/10.36834/cmej.75249>

© Katerina Schwab, 2022



Cet article est protégé par la loi sur le droit d'auteur. L'utilisation des services d'Érudit (y compris la reproduction) est assujettie à sa politique d'utilisation que vous pouvez consulter en ligne.

<https://apropos.erudit.org/fr/usagers/politique-dutilisation/>

**é**rudit

Cet article est diffusé et préservé par Érudit.

Érudit est un consortium interuniversitaire sans but lucratif composé de l'Université de Montréal, l'Université Laval et l'Université du Québec à Montréal. Il a pour mission la promotion et la valorisation de la recherche.

<https://www.erudit.org/fr/>

## Takotsubo Cardiomyopathy Cardiomyopathie de Takotsubo

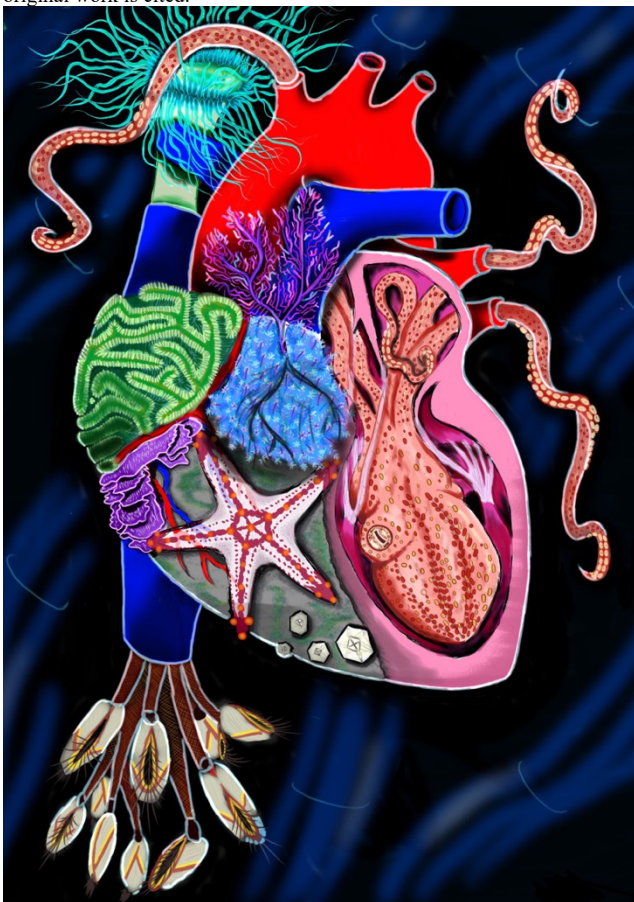
*Katerina Schwab<sup>1</sup>*

<sup>1</sup>University of British Columbia, British Columbia, Canada

Correspondence to: Katerina Schwab; email: katerinadschwab@gmail.com

Published ahead of issue: July 4, 2022; published: Sept 1, 2022. CMEJ 2022, 13(5) Available at <https://doi.org/10.36834/cmej.75249>

© 2022 Schwab; licensee Synergies Partners. This is an Open Journal Systems article distributed under the terms of the Creative Commons Attribution License. (<https://creativecommons.org/licenses/by-nc-nd/4.0>) which permits unrestricted use, distribution, and reproduction in any medium, provided the original work is cited.



I learned about Takotsubo cardiomyopathy from an upper year medical student. This disease is also known as broken heart disease and can mimic symptoms of a heart attack. It is triggered by stressful events like a loved one passing away. A characteristic finding is that the ventricle swells to the shape of a Japanese octopus trap, for which this disease was named. I wanted to draw in the octopus in the trap, and the rest of the undersea organisms kind of just happened!

**Previous publications:** I previously had the pleasure to submit my digital art to Dr. Carol Ann Courneya Heartfelt images contest for the 2022 WHITE COAT WARM HEART exhibit.