

# The mycoherbicide *Atlernaria cassiae* infects and alters phenolic metabolism of *Cassia alata* seedlings

R.E. Hoagland

Volume 76, numéro 2, 1995

URI : <https://id.erudit.org/iderudit/706086ar>

DOI : <https://doi.org/10.7202/706086ar>

[Aller au sommaire du numéro](#)

Éditeur(s)

Société de protection des plantes du Québec (SPPQ)

ISSN

0031-9511 (imprimé)

1710-1603 (numérique)

[Découvrir la revue](#)

Citer cet article

Hoagland, R. (1995). The mycoherbicide *Atlernaria cassiae* infects and alters phenolic metabolism of *Cassia alata* seedlings. *Phytoprotection*, 76(2), 67–74. <https://doi.org/10.7202/706086ar>

Résumé de l'article

Le mycoherbicide *Atlernaria cassiae*, un agent pathogène du *Cassia obtusifolia* a infecté le *Cassia alata*, une espèce de *Cassia* jamais testée auparavant. Quand des plantules de *C. alata* âgées de 2 semaines et cultivées en cabinets de croissance ont été inoculées avec  $10^5$  spores  $\text{mL}^{-1}$  suivi d'une période d'humectation de 12 h, l'infection était apparente 16-20 h après le traitement. La sévérité de l'infection était proportionnelle à la concentration de spores,  $10^6$  spores  $\text{mL}^{-1}$  entraînant une mortalité complète 4-5 jours après le traitement. L'âge des plantes influençait la gravité de la maladie et l'efficacité du mycoherbicide. À  $10^6$  spores  $\text{mL}^{-1}$ , 95 % des plantes âgées de 1-3 semaines étaient mortes, et les survivantes montraient des dommages graves; les plantes âgées de 3-4 semaines présentaient des lésions multiples, une réduction de croissance et une chute des feuilles. Finalement les plantes âgées de 5-7 semaines étaient infectées et présentaient plusieurs lésions mais elles ont repris le dessus sur la maladie. La quantité de phénylalanine-ammonia-lyase extractible des plantules de *C. alata* traitées était trois fois plus élevée que chez les plantules non traitées 17-96 h après l'application des spores. Les niveaux d'hydroxyphénols solubles étaient aussi plus élevés dans les plantules traitées à l'*A. cassiae*, mais seulement 48-96 h après le traitement. Les résultats indiquent que la gamme d'hôtes de cet agent pathogène est très large, et suggèrent que le métabolisme des composés phénoliques est accéléré en réponse à l'invasion par l'agent pathogène.

---

# The mycoherbicide *Alternaria cassiae* infects and alters phenolic metabolism of *Cassia alata* seedlings

Robert E. Hoagland<sup>1</sup>

Received 1994-10-11; accepted 1995-09-13

---

The mycoherbicide *Alternaria cassiae*, a pathogen of the weed sicklepod (*Cassia obtusifolia*), was found to infect a previously untested *Cassia* species, *Cassia alata* (ringworm bush or seven golden candlesticks). When 2-wk-old, growth chamber-grown *C. alata* seedlings were inoculated with  $10^5$  spores mL<sup>-1</sup> followed by a 12-h dew period, infection was apparent 16-20 h after treatment. Infection severity was proportional to spore concentration, and  $10^6$  spores mL<sup>-1</sup> caused complete mortality 4-5 d after treatment. Plant age was also a factor in disease severity and mycoherbicidal efficacy. At  $10^6$  spores mL<sup>-1</sup>, 95% of 1- to 3-wk-old seedlings were killed (with severe damage to others); 3- to 4-wk-old plants had multiple lesions, growth reduction, and some leaf abscission; and 5- to 7-wk-old plants were infected with many lesions, but they outgrew these effects. Extractable phenylalanine ammonia-lyase in treated *C. alata* seedlings was increased three-fold above that of untreated seedlings 17-96 h after spore application. Soluble hydroxyphenolic levels were also increased in the *A. cassiae*-treated seedlings, but not until 48-96 h after treatment. Results indicate an expanded host range for this plant pathogen and suggest that phenolic metabolism is increased in defense of pathogen invasion.

**Hoagland, R.E. 1995. Le mycoherbicide *Alternaria cassiae* infecte et altère le métabolisme phénolique des plantules de *Cassia alata*. PHYTOPROTECTION 76 : 67-74.**

Le mycoherbicide *Alternaria cassiae*, un agent pathogène du *Cassia obtusifolia* a infecté le *Cassia alata*, une espèce de *Cassia* jamais testée auparavant. Quand des plantules de *C. alata* âgées de 2 semaines et cultivées en cabinets de croissance ont été inoculées avec  $10^5$  spores mL<sup>-1</sup> suivi d'une période d'humectation de 12 h, l'infection était apparente 16-20 h après le traitement. La sévérité de l'infection était proportionnelle à la concentration de spores,  $10^6$  spores mL<sup>-1</sup> entraînant une mortalité complète 4-5 jours après le traitement. L'âge des plantes influençait la gravité de la maladie et l'efficacité du mycoherbicide. À  $10^6$  spores mL<sup>-1</sup>, 95 % des plantes âgées de 1-3 semaines étaient mortes, et les survivantes montraient des dommages graves; les plantes âgées de 3-4 semaines présentaient des lésions multiples, une réduction de croissance et une chute des feuilles. Finalement les plantes âgées de 5-7 semaines étaient infectées et présentaient plusieurs lésions mais elles ont repris le dessus sur la maladie. La quantité de phénylalanine-ammonia-lyase extractible des plantules de *C. alata* traitées était trois fois plus élevée que chez les plantules non traitées 17-96 h après l'application des spores. Les niveaux d'hydroxyphénols solubles étaient aussi plus élevés dans les plantules traitées

---

1. USDA-ARS, Southern Weed Science Laboratory, P.O. Box 350, Stoneville, Mississippi, U.S.A. 38776

à l'*A. cassiae*, mais seulement 48-96 h après le traitement. Les résultats indiquent que la gamme d'hôtes de cet agent pathogène est très large, et suggèrent que le métabolisme des composés phénoliques est accéléré en réponse à l'invasion par l'agent pathogène.

## INTRODUCTION

*Alternaria cassiae* Jurair and Khan is a dematiaceous hyphomycetous fungus originally isolated from sicklepod (*Cassia obtusifolia* L.) in Pakistan (Jurair and Khan 1960). It has since been reported in many parts of the southern United States, and its effectiveness as a mycoherbicide for the biological control of sicklepod has been demonstrated (Walker and Boyette 1985; Walker and Riley 1982). Sicklepod is a non-nodulating leguminous weed of increasing economic importance in soybean- (*Glycine max* Merr.), cotton- (*Gossypium hirsutum* L.), and peanut- (*Arachis hypogaea* L.) producing areas of the southeastern United States (Buchanan and Burns 1971; Gossett 1981; Hauser *et al.* 1975). In greenhouse tests, *A. cassiae* infected showy crotalaria (*Crotalaria spectabilis* Roth.) and one other species of *Cassia*, coffee senna (*Cassia occidentalis* L.), but did not infect 30 other crop and weed species (Walker 1982). Thus far, there appears to be no other reports of *Cassia* species tested for interactions with this organism.

*Cassia alata* L., commonly called ring-worm bush or seven golden candlesticks, is a perennial legume found in damp habitats (Reed 1977). It is indigenous to North America but is now dispersed throughout the tropical regions of Malaysia, India, Pakistan, and the Philippine Islands (Anonymous 1967; Reed 1977). This plant is grown as an ornamental, and its leaves and seeds have been used for medicinal purposes (Chopra *et al.* 1956).

Plant pathogens have infection processes that may circumvent plant defense mechanisms. Several common plant defense mechanisms are known, but most of this knowledge has arisen from the study of crop-pathogen interactions with very little attention to weed-pathogen interactions (Hoagland 1990a). Such interactions are important in developing protocols for biological control of weeds

with plant pathogens. Recently, investigations concerning the biochemical interactions of *Alternaria crassa* (Sacc.) Sands and *A. cassiae* for jimsonweed (*Datura stramonium* L.) and sicklepod, respectively, have shown that phenylalanine ammonia-lyase (PAL) and phenolic products regulated by PAL increase in response to infection (Hoagland 1990b; Hoagland and Boyette 1994). To provide further insight into defense mechanisms of plants challenged by *A. cassiae*, and due to the importance of pathogen-plant interactions, the following studies were undertaken. The objectives were: (i) to determine if *C. alata* is within the host range of *A. cassiae*, (ii) to evaluate the infectivity and injury caused by inundative spore levels of this bioherbicide, and (iii) to examine PAL activity and soluble hydroxyphenolic levels in treated and untreated *C. alata* seedlings to assess their role in plant defense against this pathogen.

## MATERIALS AND METHODS

### Plant material and culture

Seeds of *C. alata* were obtained from a local nursery and planted in a potting mixture consisting of vermiculite and peat (1:1; vol:vol) moistened with dilute N-P-K (20-20-20) solution. Seed trays were placed in a growth chamber (14-h d, 300  $\mu\text{mol m}^{-2} \text{s}^{-1}$  PAR, 30°C; 10-h night, 25°C). Plants were grown for various times up to 2-6 wk before testing.

### Spore preparation and inoculation

Spores were prepared in an aqueous emulsion of soybean oil and distilled water (1:1; vol:vol). Plants were uniformly sprayed with the spore emulsion at  $10^5$  or  $10^6$  spores  $\text{mL}^{-1}$ , placed in a dew chamber for 12 h, then moved to a growth chamber with the environmental conditions described above. Control plants received emulsion without spores. Plants were examined at various intervals over a 6-d period and ratings of disease symptomatology and severity were made.

Leaves stained with lactophenol blue were examined under a microscope to determine germination and growth of spores and mycelial production (Tuite 1969). Tests were made on plant age vs. mycoherbicide efficacy and on spore concentration vs. mycoherbicide efficacy. Sicklepod plants were also tested in side-by-side treatments for direct comparison in some experiments.

### Injury rating of *A. cassiae* on *Cassia* spp. plants

The effects of *A. cassiae* on *C. alata* and *C. obtusifolia* were examined in side-by-side evaluations. Visual ratings were made using an injury scale: 0 = normal growth (no symptoms); 1 = symptoms barely discernible; 2 = symptoms clearly visible (multiple lesions, but less than 50% of leaf surfaces affected); 3 = moderate symptoms (about 50% of leaf surfaces with lesions, some necrosis and chlorosis becoming apparent); 4 = severe symptoms (about 75% of leaf surfaces with expanding lesions, increased necrosis and chlorosis); 5 = extremely severe symptoms (about 95% of leaf surfaces with lesions, some leaf abscission, lesions and necrosis appearing on some stems); 6 = leaves dead, increased leaf abscission, stem lesions, and necrosis.

### Soluble hydroxyphenolics extraction and assay

Hydroxyphenolic compounds were extracted from *C. alata* plants with methanol (100%). Excised tissue was homogenized with methanol at 0-4°C using a high-speed homogenizer. Homogenates were then centrifuged at 20 000 *g*, 15 min at 0-4°C. Supernatants were quantitatively assayed for total hydroxyphenolic content using a colorimetric procedure with the Folin-Ciocalteu reagent (Singleton and Rossi 1965). Absorbance at 756 nm was measured and the phenolic concentration determined using a standard curve based on colorimetric analysis of an equimolar mixture of caffeic acid, chlorogenic acid, *p*-coumaric acid, and quercetin.

### PAL extraction and assay

PAL activity was extracted, partially purified, and assayed as described elsewhere (Hoagland *et al.* 1979). Enzyme activity is expressed in milliunits (mU); a

mU is defined as the amount of enzyme required to produce 1 nmol min<sup>-1</sup> of *t*-cinnamic acid from L-phenylalanine at 30°C (Havir and Hanson 1970). Enzyme activity is expressed as specific activity (mU mg<sup>-1</sup> protein), and protein concentration was determined using UV spectrophotometry (Murphy and Kies 1960).

### Experimental design and statistics

The experimental design used was a completely randomized design, and all tests were duplicated or triplicated (4-8 plants replication<sup>-1</sup>). The experiment was repeated in time. Data were subjected to ANOVA (SAS Institute Inc. 1989) and mean comparisons performed using Fisher's protected LSD.

## RESULTS

### Infectivity studies

*C. alata* seeds germinated well, and growth proceeded relatively rapidly. This species can attain heights of 2 m, and this was observed in field-grown plants after about 3 mo (Fig. 1). *A. cassiae* (10<sup>6</sup> spores mL<sup>-1</sup>) was able to infect plants



Figure 1. Field-grown *C. alata*, flowering about 3 mo after emergence.

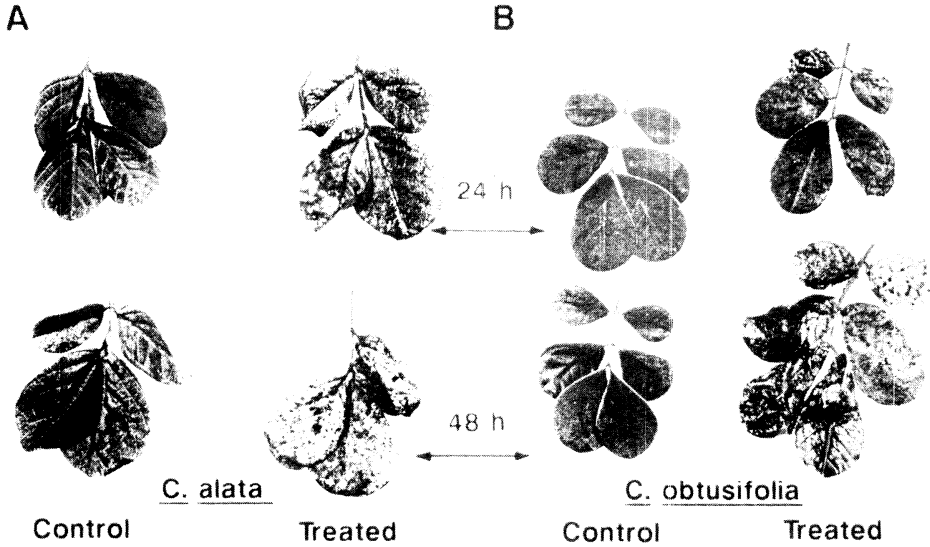


Figure 2. Chlorosis and necrotic leaf lesions in *C. alata* and *C. obtusifolia* leaves caused by *A. cassiae*. A : 24 HAT; B : 48 HAT.

of this size, but damage to these large plants was minimal (data not shown). However, when *A. cassiae* spores ( $10^6$  spores  $\text{mL}^{-1}$ ) were applied to 3-wk-old sicklepod and *C. alata* seedlings, spores germinated and formed mycelia and appressoria on leaf surfaces after 12 h (data not shown) and injury was apparent in both species at 24 and 48 hours after treatment (HAT) (Fig. 2). Infection, lesions, necrosis, and some chlorosis were observed in both species, mostly on the leaf surfaces, as opposed to stems. The two species have similar leaf size and shape at young growth stages (compare Fig. 2 a,b). These results clearly indicate that *C. alata* is susceptible to this pathogen when applied in an augmentative manner.

Injury by *A. cassiae* on this new host (and on sicklepod for comparison) was further evaluated by challenging plants in the 3-leaf growth stage with  $10^6$  spores  $\text{mL}^{-1}$  and rating the injury over a 6-d time course (Fig. 3). *C. alata* was somewhat more resistant to this spore concentration than was sicklepod. This was especially true later in the time course, since some *C. alata* plants produced new leaves that exhibited little or no injury. By 100-144 HAT, the lesions caused by *A. cassiae* on *C. obtusifolia*

were often observed to be round and about 1-mm diam or less, whereas on *C. alata*, lesions were larger and oblong or angular (2.0 mm  $\times$  4.0 mm).

*C. alata* was tested at various growth stages with  $10^5$  spores  $\text{mL}^{-1}$  and rated at three different times over a 144-h period (Fig. 4). Infection was clearly visible 12 HAT in the young, 1- to 2-leaf stage seedlings. Injury or death of these plants had occurred by 72 HAT. Plants had not recovered 144 HAT. Older plants in the 4- to 5-leaf stage were less susceptible to the fungus at these respective rating

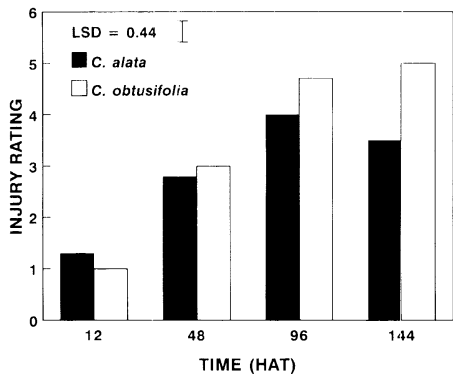


Figure 3. Injury levels caused by *A. cassiae* ( $10^6$  spores  $\text{mL}^{-1}$ ) on *C. alata* and *C. obtusifolia* over a 144-h time course.

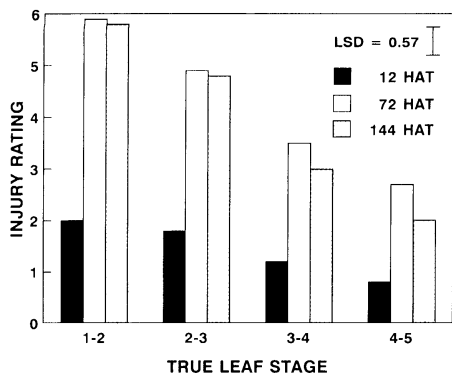


Figure 4. Injury levels caused by *A. cassiae* ( $10^5$  spores mL<sup>-1</sup>) to *C. alata* plants at various growth stages at three rating periods.

periods. As before, the older plants were able to resist and outgrow some of the bioherbicidal effects. However, substantial leaf abscission was observed in all plants, indicating some bioherbicidal effects, even against older plants. In final infectivity tests, *C. alata* was sprayed with *A. cassiae* spores, infection was allowed to proceed, and pathogen isolation from leaf lesions was performed. The isolates from this procedure were grown on potato dextrose agar and spores from these plate cultures infected young *C. obtusifolia* and *C. alata* seedlings in a manner analogous to the original *A. cassiae* spores used in this study (data not shown).

#### Effects of *A. cassiae* on *C. alata* phenolic metabolism

Extractable PAL activity, on a specific activity basis, generally increased slightly over time in shoots of the emulsion-treated *C. alata* seedlings (Fig. 5). PAL activity in shoots of *A. cassiae*-treated plants rose dramatically above control levels from 17 to 96 HAT and was about 3.5-fold above control levels 40 HAT. Increased PAL activity in pathogen-treated plants declined somewhat after 40-96 h, but still remained more than 2-fold above control levels.

Methanolic extracts of *C. alata* seedlings were analyzed for total soluble hydroxyphenolic compound (PAL product) content in *A. cassiae*-treated and non-treated seedlings (Fig. 6). There was a general increase in soluble hydroxyphenolic

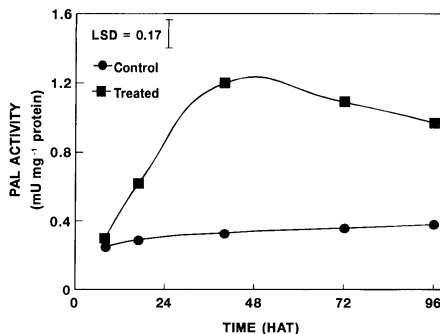


Figure 5. Specific activity of extractable PAL activity in *A. cassiae*-treated *C. alata* seedlings.

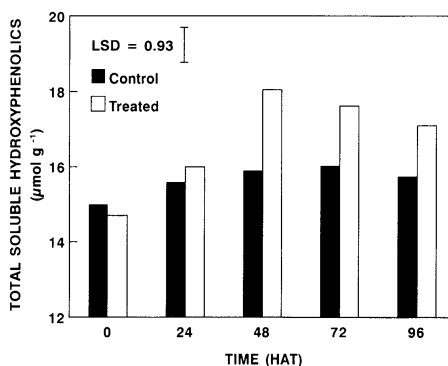


Figure 6. Soluble hydroxyphenolic compound levels in *A. cassiae*-treated *C. alata* seedlings, expressed on a fresh weight basis.

nolic content of non-treated seedlings over the time course. This trend was also observed in the *A. cassiae*-treated seedlings, but levels were significantly higher than those in non-treated plants 48-96 HAT.

## DISCUSSION

*A. cassiae* was more pathogenic to younger *C. alata* plants. This is generally typical of both herbicidal and bioherbicidal activity. Older plants are more tolerant and have more thoroughly developed cuticles, wax accumulation, etc., that can lower retention and penetration of molecules and mycelia. The fact that infection of, and injury to, *C. alata* caused by *A. cassiae* was generally more immediate and severe in the leaves than in stem tissue may be a function of the relatively greater retention of spore-containing

emulsion droplets on the former plant organ. Stems are also more woody than leaf tissue. Differences in lesion appearance in *C. alata* and *C. obtusifolia* could be caused by quantitative and qualitative differences in wax formation on leaf surfaces, or by nyctitropic and thigmotropic movements (caused by changes in photo-intensity, spraying, or transporting of plants during spray application) observed in both species. Wax formation, pubescence, and angular disposition of a leaf surface could affect spore-emulsion droplet flow, and thereby influence spore concentration, germination, and infectivity. Similar principles are involved in herbicide retention. The inherent wettability of the leaf surface, (influenced by leaf pubescence and waxiness, and the surface tension of the formulation applied) are major factors in foliar retention of herbicides (Anderson 1983).

The effects of *A. cassiae* on phenolic metabolism in *C. alata* were quite similar to those reported for *A. cassiae*-*C. obtusifolia* interactions (Hoagland 1990b). Both PAL activity and PAL product (soluble hydroxyphenolic) levels were increased within hours of treatment. But, as in *C. obtusifolia*, increased PAL activity and phenolic production in *C. alata* did not confer resistance to *A. cassiae*, at least at these applied spore levels and to plants of a young age. Older plants (> 6-wk old) or mature flowering plants are relatively immune to these spore levels under these conditions, which may suggest that this phenolic defense mechanism is successful.

Phenolics have been demonstrated to play a role in plant resistance to *Alternaria* spp. For example, cotton seedlings resistant to *A. macrospora* Zimm. possess a higher phenolic content than susceptible varieties (Bashan 1986). Phenolic extracts from infected plants could also inhibit growth of this fungal pathogen *in vitro*. Phenolic metabolism of two jimsonweed varieties was increased when plants were challenged by a pathogen (*A. crassa*) that has potential as a mycoherbicide (Hoagland and Boyette 1994). The presence of phenolic plant constituents may ward off pathogen infection, and older plants may have larger pools of such compounds. *C. alata* has been

shown to possess relatively large amounts of flavonoids and anthroquinones (Gupta and Singh 1991). Elicitation by *A. cassiae* of a flavonoid in sicklepod has recently been reported (Sharon and Gressel 1991). This compound had antifungal activity against *A. cassiae* and *A. alternata* (Fr.) Keissler.

Pathogens initially thought to have a specific host range have later been shown to infect a wider range of plants. One example is the fungal pathogen *Colletotrichum gloeosporioides* (Penz.) Penz. et Sacc. f.sp. *aeschynomene* which causes an anthracnose of the weed northern jointvetch [*Aeschynomene virginica* (L.) B.S.P.] (Daniel *et al.* 1973). The pathogen was used as a mycoherbicide and was initially thought to be specific for *A. virginica* and *A. indica* L. after field and greenhouse host range tests (Daniel *et al.* 1973). It was later shown to infect some but not all cultivars of peas (*Pisum sativum* L.), lupines (*Lupinus* spp.), sweet pea (*Lathyrus* spp.), and broad bean (*Vicia faba* L.), proving a wider host range for this pathogen, even though species from 20 crop genera were immune (TeBeest 1988).

It is quite possible that *A. cassiae* could also infect some other *Cassia* species and species unrelated to *Cassia*. Considering *C. alata* as an ornamental, the use of *A. cassiae* as a mycoherbicide to control *C. obtusifolia* could perhaps increase pathogen levels sufficiently in nearby fields to endanger or cause damage to a non-target species. On the other hand, there are many examples of plants introduced as beneficials or ornamentals that have escaped and become serious weed problems. Theoretically, this is possible with *C. alata*, and in that case, the mycoherbicide *A. cassiae* could be a biocontrol agent.

The overall results of these studies of infectivity and phenolic metabolism of *A. cassiae*-*C. alata* are very similar to those reported for this pathogen's interactions with *C. obtusifolia* (Walker and Riley 1982). Four phytotoxins have been isolated from *A. cassiae*. However, they were generally more phytotoxic to corn (*Zea mays* L.) and crabgrass (*Digitaria* spp.) than to sicklepod (Hradil *et al.* 1989). These two

*Cassia* species appear to be equally affected by these phytotoxins.

*A. cassiae* is pathogenic to *C. alata*. It can infect and cause severe damage or death to *C. alata* seedlings at mycoherbicidal concentrations ( $10^5$ - $10^6$  spores mL<sup>-1</sup>) if the plants are relatively young ( $\leq$  3-wk old). This information shows an extended host range of this pathogen to three species in the genus *Cassia* (*C. obtusifolia*, *C. occidentalis*, and *C. alata*). This data is important in understanding biological control of weeds with plant pathogens and in understanding biochemical defense mechanisms of weeds against pathogens.

## ACKNOWLEDGEMENTS

The author thanks Ms. Velma Robertshaw for excellent technical support, and Greenville Garden Center, Greenville, Mississippi, for kindly providing seeds of *C. alata*. Mycogen Corporation generously provided *A. cassiae* spores for this project.

## REFERENCES

- Anderson, W.P.** 1983. Entry of herbicides into plants. Pages 477-501 in *Weed Science: Principles*, 2<sup>nd</sup> Edition. West Publ. Co., St. Paul, Minnesota.
- Anonymous.** 1967. Identification of plants on Malayan estates. *Cassia* species. Rubber Res. Inst., Planter's Bull. 89 : 53-65.
- Bashan, Y.** 1986. Phenols in cotton seedlings resistant and susceptible to *Alternaria macrospora*. J. Phytopathol. 116 : 1-10.
- Buchanan, G.A., and E.R. Burns.** 1971. Weed competition in cotton. I. Sicklepod and tall morningglory. Weed Sci. 19 : 576-579.
- Chopra, R.N., S.L. Nayar, and I.C. Chopra.** 1956. Glossary of Indian medicinal plants. Council of Scientific and Industrial Research (CSIR), New Delhi, 329 pp.
- Daniel, J.T., G.E. Templeton, R.J. Smith, Jr., and W.T. Fox.** 1973. Biological control of northern jointvetch in rice with an endemic fungal disease. Weed Sci. 21 : 303-307.
- Gossett, B.J.** 1981. Sicklepod - how to control it in soybeans. Weeds Today 12 : 29-30.
- Gupta, D., and J. Singh.** 1991. Flavonoid glycosides from *Cassia alata*. Phytochemistry 30 : 2761-2763.
- Hauser, E.W., G.A. Buchanan, and W.J. Ethredge.** 1975. Competition of Florida beggarweed and sicklepod with peanuts. I. Weed-free maintenance and weed competition. Weed Sci. 23 : 368-372.
- Havir, E.A., and L.R. Hanson.** 1970. L-phenylalanine ammonia-lyase (potato tubers). Pages 575-581 in H. Tabor and C.W. Tabor (eds), Methods in enzymology 17A. Acad. Press, New York.
- Hoagland, R.E.** 1990a. Biochemical responses to pathogens. Pages 87-113 in R.E. Hoagland (ed.), Microbes and microbial products as herbicides, Am. Chem. Soc. Sym. Ser. No. 439. ACS Press, Washington, DC.
- Hoagland, R.E.** 1990b. *Alternaria cassiae* alters phenylpropanoid metabolism in sicklepod (*Cassia obtusifolia*). J. Phytopathol. 130 : 177-187.
- Hoagland, R.E., and C.D. Boyette.** 1994. Pathogenic interactions of *Alternaria crassa* and phenolic metabolism in jimsonweed (*Datura stramonium* L.) varieties. Weed Sci. 42 : 44-49.
- Hoagland, R.E., S.O. Duke, and C.D. Elmore.** 1979. Effects of glyphosate on metabolism of phenolic compounds. III. Phenylalanine ammonia-lyase activity, free amino acids, soluble protein, and hydroxyphenolic compounds in axes of dark-grown soybeans. Physiol. Plant. 46 : 357-366.
- Hradil, C.M., Y.F. Hallock, J. Clardy, D.S. Kenfield, and G. Strobel.** 1989. Phytotoxins from *Alternaria cassiae*. Phytochemistry 28 : 73-75.
- Jurair, A.M.N., and A. Khan.** 1960. A new species of *Alternaria* on *Cassia holsericea* Fresem. Pak. J. Sci. Indust. Res. 3 : 71-72.
- Murphy, J.B., and M.W. Kies.** 1960. Note on the spectrophotometric determination of protein in dilute solutions. Biochem. Biophys. Acta 45 : 382-384.
- Reed, C.F.** 1977. Economically important foreign weeds. Agriculture Handbook No. 498. U.S. Dept. Agric., Washington, DC, 746 pp.
- SAS Institute Inc.** 1989. SAS user's guide : Statistics. 6 Ed. SAS Institute Inc., Cary, North Carolina.



- Sharon, A., and J. Gressel. 1991.** Elicitation of a flavonoid phytoalexin accumulation in *Cassia obtusifolia* by a mycoherbicide: estimation by  $AlCl_3$ -spectro-fluorimetry. *Pestic. Biochem. Physiol.* 41 : 142-149.
- Singleton, Y.L., and A.J. Rossi, Jr. 1965.** Colorimetry of total phenolics with phosphomolybdic-phosphotungstic acid reagents. *Am. J. Enol. Vit.* 16 : 144-158.
- TeBeest, D.O. 1988.** Additions to host range of *Colletotrichum gloeosporioides* f. sp. *aeschynomene*. *Plant Dis.* 72 : 16-18.
- Tuite, J. 1969.** Page 204-223 in *Plant pathological methods: fungi and bacteria*. Burgess Publ. Co., Minneapolis, Minnesota.
- Walker, H.L. 1982.** Seedling blight of sicklepod caused by *Alternaria cassiae*. *Plant Dis.* 66 : 426-428.
- Walker, H.L., and C.D. Boyette. 1985.** Biocontrol of sicklepod (*Cassia obtusifolia*) in soybeans (*Glycine max*) with *Alternaria cassiae*. *Weed Sci.* 33 : 212-215.
- Walker, H.L., and J.A. Riley. 1982.** Evaluation of *Alternaria cassiae* for the biocontrol of sicklepod (*Cassia obtusifolia*). *Weed Sci.* 30 : 651-654.